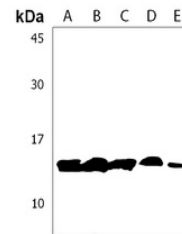


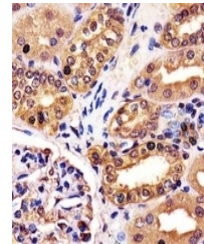
## Product Datasheet

### Anti-RNF7 Antibody (orb1879312)

|                            |   |
|----------------------------|---|
| <b>Description</b>         | Rabbit polyclonal antibody to RNF7  |
| <b>Reactivity</b>          | Human, Mouse  |
| <b>Conjugation</b>         | Unconjugated  |
| <b>Tested Applications</b> | IH, WB  |
| <b>Immunogen</b>           | KLH-conjugated synthetic peptide encompassing a sequence within the N-terminal region of human RNF7. The exact sequence is proprietary. |
| <b>Form/Appearance</b>     | Liquid in 0.42% Potassium phosphate, 0.87% Sodium chloride, pH 7.3, 30% glycerol, and 0.01% sodium azide.                               |
| <b>Storage</b>             | Shipped at 4°C. Upon delivery aliquot and store at -20°C for one year. Avoid freeze/thaw cycles.  |
| <b>Note</b>                | For research use only   |
| <b>Clonality</b>           | Polyclonal  |
| <b>Source</b>              | Rabbit  |
| <b>Uniprot ID</b>          | <a href="#">Q9UBF6</a> , <a href="#">Q9WTZ1</a>   |
| <b>Entrez</b>              | <a href="#">19823</a> , <a href="#">9616</a>  |
| <b>Dilution Range</b>      | WB (1/1000 - 1/2000), IH (1/50 - 1/200)   |
| <b>Expiration Date</b>     | 12 months from date of receipt.   |



Western blot analysis of RNF7 expression...



Immunohistochemical analysis of RNF7 sta...