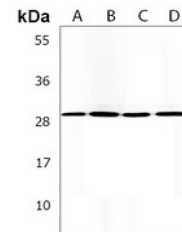


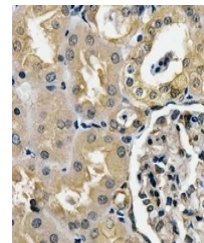
Product Datasheet

Anti-COPS7B Antibody (orb1879162)

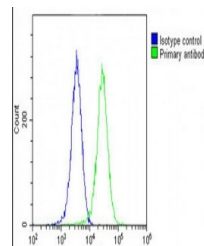
Description	Rabbit polyclonal antibody to COPS7B
Reactivity	Human
Conjugation	Unconjugated
Tested Applications	FC, IH, WB
Immunogen	KLH-conjugated synthetic peptide encompassing a sequence within the Central region of human COPS7B. The exact sequence is proprietary.
Form/Appearance	Liquid in 0.42% Potassium phosphate, 0.87% Sodium chloride, pH 7.3, 30% glycerol, and 0.01% sodium azide.
Storage	Shipped at 4°C. Upon delivery aliquot and store at -20°C for one year. Avoid freeze/thaw cycles.
Note	For research use only
Clonality	Polyclonal
Source	Rabbit
Uniprot ID	Q9H9Q2
Entrez	64708
Dilution Range	WB (1/500 - 1/1000), IH (1/50 - 1/200), FC (1/10 - 1/30)
Expiration Date	12 months from date of receipt.



Western blot analysis of COPS7B expressi...



Immunohistochemical analysis of COPS7B S...



Flow cytometric analysis of HeLa cells U...