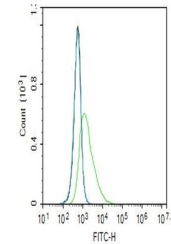


Product Datasheet

pGluR1 antibody (orb1879)

Description	pGluR1 antibody
Species/Host	Rabbit
Reactivity	Human
Conjugation	Unconjugated
Tested Applications	FC
Immunogen	KLH conjugated synthesised phosphopeptide derived from human GluR1 around the phosphorylation site of Ser836 (SE(p-S)KR)
Target	phospho-GluR1 (Ser836)
Preservatives	0.01M TBS(pH7.4) with 1% rAlbumin, 0.03% Proclin300 and 50% Glycerol.
Form/Appearance	Liquid
Concentration	1mg/ml
Storage	Maintain refrigerated at 2-8°C for up to 2 weeks. For long term storage store at -20°C in small aliquots to prevent freeze-thaw cycles.
Note	For research use only
Isotype	IgG
Clonality	Polyclonal
MW	98 kDa
Uniprot ID	P42261
Dilution Range	Flow-Cyt=1ug/Test
Expiration Date	12 months from date of receipt.



Flow cytometry of SH-SY5Y. Primary Antibody...