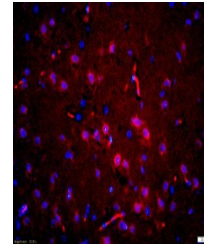


Product Datasheet

pTau protein antibody (orb1878)

Description	pTau protein antibody
Species/Host	Rabbit
Reactivity	Human, Mouse, Rat
Conjugation	Unconjugated
Tested Applications	FC, ICC, IF, IHC-P, WB
Immunogen	KLH conjugated Synthesised phosphopeptide derived from human Tau around the phosphorylation site of Thr181 (PK(p-T)PP)
Target	phospho-Tau (Thr181)
Preservatives	0.01M TBS(pH7.4) with 1% rAlbumin, 0.03% Proclin300 and 50% Glycerol.
Form/Appearance	Liquid
Concentration	1mg/ml
Storage	Shipped at 4°C. Store at -20 °C for one year. Avoid repeated freeze/thaw cycles.
Note	For research use only
Isotype	IgG
Clonality	Polyclonal
MW	52/83 kDa
Uniprot ID	P10636
Dilution Range	WB=1:500-2000, IHC-P=1:100-500, ICC=1:100, IF=1:50-200, Flow-Cyt=1ug/test
Expiration Date	12 months from date of receipt.



Immunohistochemical analysis of formalin...