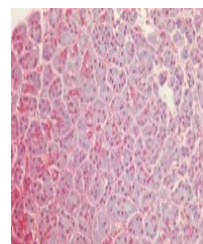


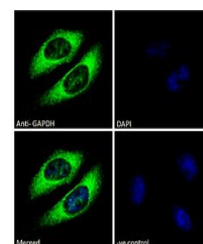
Product Datasheet

GAPDH antibody (orb18774)

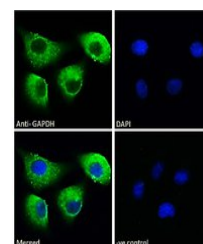
Description	Goat polyclonal antibody to GAPDH
Species/Host	Goat
Reactivity	Canine, Human, Mouse, Porcine
Conjugation	Unconjugated
Tested Applications	ELISA, IF, IHC, WB
Target	GAPDH (C Terminus) Loading Control
Preservatives	Supplied at 0.5 mg/ml in Tris saline, 0.02% sodium azide, pH 7.3 with 0.5% bovine serum albumin. Aliquot and store at -20°C. Minimize freezing and thawing.
Storage	Aliquot and store at -20°C. Minimize freezing and thawing.
Note	For research use only
Application notes	ELISA: Peptide ELISA: antibody detection limit dilution 1:2000.WB: Approx 35kDa band observed in lysates of Human Tonsil, Mouse Spleen, and cell lines HeLa, A431 and 293 (calculated MW of 36.1kDa according to NP_002037). Recommended concentration: 0.01-0.03 µg/ml.
Protein Sequence	HQVVSSDFNSDT
Clonality	Polyclonal
MW	36.1
Entrez	2597
Dilution Range	ELISA: 1:128000, WB: 0.001-0.003 µg/ml, IHC-P: 2.5 µg/ml, IF/ICC: 10µg/ml
Expiration Date	12 months from date of receipt.



Immunohistochemical staining of Human Paraformaldehyde-fixed tissue showing GAPDH expression.



Immunofluorescence analysis of paraformaldehyde-fixed cells showing GAPDH (green) and DAPI (blue) staining.



Immunofluorescence analysis of paraformaldehyde-fixed cells showing GAPDH (green) and DAPI (blue) staining.