

## Product Datasheet

### KIF5B antibody (orb18770)

**Description**

Goat polyclonal antibody to KIF5B

**Species/Host**

Goat

**Reactivity**

Bovine, Canine, Human, Mouse, Rat

**Conjugation**

Unconjugated

**Tested**

ELISA, IF, WB

**Applications**
**Target**

Kinesin 1 / UKHC

**Preservatives**

Supplied at 0.5 mg/ml in Tris saline, 0.02% sodium azide, pH 7.3 with 0.5% bovine serum albumin. Aliquot and store at -20°C. Minimize freezing and thawing.

**Storage**

Aliquot and store at -20°C. Minimize freezing and thawing.

**Note**

For research use only

**Application notes**

ELISA: Peptide ELISA: antibody detection limit dilution 1:32000. IHC: In paraffin embedded Human Kidney, shows perinuclear labelling of some glomerular cells and cytoplasmic staining of renal tubules. Recommended concentration, 1-2ug/ml. In paraffin embedded Human Uterus shows strong staining of the epithelium on endometrWB: Approx 120kDa band observed in Human Kidney lysates (calculated MW of 110kDa according to NP\_004512.1). Recommended for use at 0.2-1 µg/ml.

**Protein Sequence**

QPVAVRGGGGKQV

**Clonality**

Polyclonal

**MW**

110

**Entrez**
**3799**
**Dilution Range**

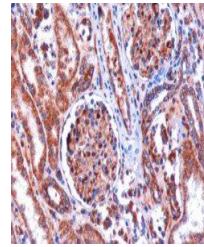
ELISA: 1:8000, WB: 0.5-1.5 µg/ml

**Expiration Date**

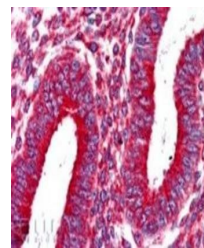
12 months from date of receipt.




Western blot analysis of Human Kidney ly...



Immunohistochemical staining of Human Ki...



Immunohistochemical staining of Human Ut...