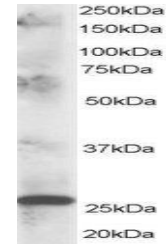


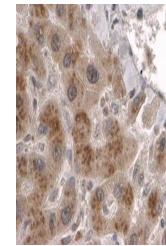
Product Datasheet

CLPP antibody (orb18760)

Description	Goat polyclonal antibody to CLPP
Species/Host	Goat
Reactivity	Human
Conjugation	Unconjugated
Tested Applications	ELISA, IHC, WB
Target	CLPP
Preservatives	Supplied at 0.5 mg/ml in Tris saline, 0.02% sodium azide, pH 7.3 with 0.5% bovine serum albumin. Aliquot and store at -20°C. Minimize freezing and thawing.
Storage	Aliquot and store at -20°C. Minimize freezing and thawing.
Note	For research use only
Application notes	ELISA: Peptide ELISA: antibody detection limit dilution 1:64000.IHC: In paraffin embedded Human Liver shows patterned staining of hepatocyte cytoplasm. Recommended concentration, 2-4ug/ml.WB: Approx 27-30kDa band observed in human heart and skeletal muscle lysates (predicted MW of 32kDa according to NP_006003). Recommended for use at 1-3 µg/ml.
Protein Sequence	EAAPAAEPVPAST
Clonality	Polyclonal
MW	30.2
Entrez	8192
Dilution Range	ELISA: 1:1000, WB: 1-3 µg/ml, IHC-P: 2-4µg/ml
Expiration Date	12 months from date of receipt.



orb18760 staining (1ug/ml) of human musc...



orb18760 staining of paraffin embedded H...