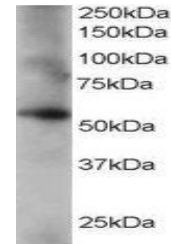


## Product Datasheet

### CORO1C antibody (orb18756)

<b>Description</b>	Goat polyclonal antibody to CORO1C
<b>Species/Host</b>	Goat
<b>Reactivity</b>	Bovine, Human, Porcine
<b>Conjugation</b>	Unconjugated
<b>Tested Applications</b>	ELISA, WB
<b>Target</b>	Coronin 3 / coronin 1C
<b>Preservatives</b>	Supplied at 0.5 mg/ml in Tris saline, 0.02% sodium azide, pH 7.3 with 0.5% bovine serum albumin. Aliquot and store at -20°C. Minimize freezing and thawing.
<b>Storage</b>	Aliquot and store at -20°C. Minimize freezing and thawing.
<b>Note</b>	For research use only
<b>Application notes</b>	ELISA: Peptide ELISA: antibody detection limit dilution 1:64000.WB: Approx 55kDa band observed in human lung and placenta lysates (calculated MW of 53.2kDa according to NP_055140.1). Recommended for use at 0.2-1 µg/ml.
<b>Protein Sequence</b>	RISKLEQQMAKIAA
<b>Clonality</b>	Polyclonal
<b>MW</b>	53.2
<b>Entrez</b>	<b>23603</b>
<b>Dilution Range</b>	ELISA: 1:64000, WB: 0.2-1 µg/ml
<b>Expiration Date</b>	12 months from date of receipt.



orb18756 staining (0.2µg/ml) of human lu...