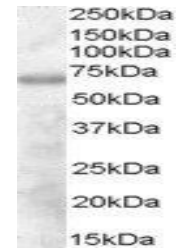


Product Datasheet

DEF6 antibody (orb18731)

Description	Goat polyclonal antibody to DEF6
Species/Host	Goat
Reactivity	Bovine, Canine, Human, Mouse, Porcine, Rat
Conjugation	Unconjugated
Tested Applications	ELISA, WB
Target	IBP / DEF6
Preservatives	Supplied at 0.5 mg/ml in Tris saline, 0.02% sodium azide, pH 7.3 with 0.5% bovine serum albumin. Aliquot and store at -20°C. Minimize freezing and thawing.
Storage	Aliquot and store at -20°C. Minimize freezing and thawing.
Note	For research use only
Application notes	ELISA: Peptide ELISA: antibody detection limit dilution 1:2000.WB: Approx. 70kDa band observed in Human Thymus lysates (calculated MW of 73.9kDa according to NP_071330.3). Recommended concentration: 1-3 µg/ml.
Protein Sequence	ALRKELLKSIWYA
Clonality	Polyclonal
MW	73.9
Entrez	50619
Dilution Range	ELISA: 1:2000, WB: 1-3 µg/ml
Expiration Date	12 months from date of receipt.



orb18731
(1µg/ml)
staining of
Human
Thym...