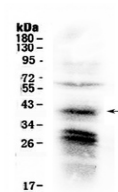


Product Datasheet

CXCR4 Antibody (orb18714)

Description	CXCR4 Antibody
Species/Host	Rabbit
Reactivity	Human
Conjugation	Unconjugated
Tested Applications	WB
Immunogen	A synthetic peptide corresponding to a sequence at the C-terminus of human CXCR4 (265-294aa ILLEIIKQGCEFENTVHKWISITEALAFFH), different from the related mouse sequence by five amino acids, and from the related rat sequence by three amino acids.
Form/Appearance	Lyophilized
Concentration	Adding 0.2 ml of distilled water will yield a concentration of 500 µg/ml.
Storage	Store at -20°C for one year from date of receipt. After reconstitution, at 4°C for one month. It can also be aliquotted and stored frozen at -20°C for six months. Avoid repeated freeze-thaw cycles.
Note	For research use only
Application notes	Tested Species: In-house tested species with positive results. Other applications have not been tested. Optimal dilutions should be determined by end users. Add 0.2ml of distilled water will yield a concentration of 500ug/ml.
Isotype	Rabbit IgG
Clonality	Polyclonal
MW	39746 MW
Uniprot ID	P61073
Expiration Date	12 months from date of receipt.



WB analysis of CXCR4 using anti-CXCR4 an...