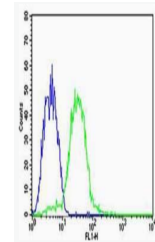


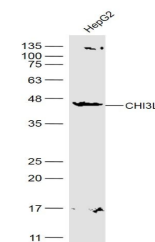
Product Datasheet

CHI3L1 antibody (FITC) (orb187072)

Description	CHI3L1 antibody (FITC)
Species/Host	Rabbit
Reactivity	Human
Conjugation	FITC
Tested Applications	FC, IF
Immunogen	KLH conjugated synthetic peptide derived from human CHI3L1
Target	CHI3L1
Preservatives	0.01M TBS(pH7.4) with 1% rAlbumin, 0.03% Proclin300 and 50% Glycerol.
Form/Appearance	Liquid
Concentration	1mg/ml
Storage	Shipped at 4°C. Store at -20 °C for one year. Avoid repeated freeze/thaw cycles.
Note	For research use only
Isotype	IgG
Clonality	Polyclonal
Uniprot ID	Q9WTV1
Dilution Range	Flow-Cyt=1µg/Test,IF=1:100-500
Expiration Date	12 months from date of receipt.



Flow cytometric analysis of HepG2 cell u...



Western blot analysis of Human HepG2 Cel...