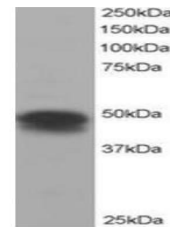


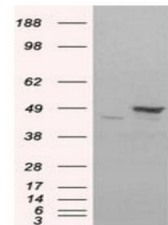
Product Datasheet

Flotillin 1 antibody (orb18696)

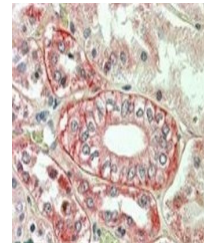
Description	Goat polyclonal to Flotillin 1
Species/Host	Goat
Reactivity	Bovine, Canine, Human, Porcine
Conjugation	Unconjugated
Tested Applications	ELISA, IHC, WB
Target	Flotillin 1
Preservatives	Supplied at 0.5 mg/ml in Tris saline, 0.02% sodium azide, pH 7.3 with 0.5% bovine serum albumin. Aliquot and store at -20°C. Minimize freezing and thawing.
Storage	Aliquot and store at -20°C. Minimize freezing and thawing.
Note	For research use only
Application notes	ELISA: Peptide ELISA: antibody detection limit dilution 1:32000.WB: Approx 48kDa band observed in lysates of cell line H460 (calculated MW of 47.4kDa according to NP_005794.1). In transfected HEK293 transiently expressing FLOT1 a band of approx. 48kDa is observed. This band is not observed in the non-transfected HEK293. Recommended for use at 0.3-1 µg/ml.
Protein Sequence	SISQVNHKPLRTA
Clonality	Polyclonal
MW	47.4; 42.1
Entrez	10211
Dilution Range	ELISA: 1:32000, WB: 0.1-0.3 µg/ml
Expiration Date	12 months from date of receipt.



Western blot analysis of H460 lysate usi...



Western blot analysis of HEK293 lysate u...



Immunohistochemical staining of Human Ki...