
Product Datasheet

AKR1A1 antibody (orb18681)

Description

Goat polyclonal antibody to AKR1A1

Species/Host

Goat

Reactivity

Bovine, Canine, Human, Mouse, Porcine, Rat

Conjugation

Unconjugated

Tested Applications

ELISA, IHC, WB

Target

Aldehyde Reductase

Preservatives

Supplied at 0.5 mg/ml in Tris saline, 0.02% sodium azide, pH 7.3 with 0.5% bovine serum albumin. Aliquot and store at -20°C. Minimize freezing and thawing.

Storage

Aliquot and store at -20°C. Minimize freezing and thawing.

Note

For research use only

Application notes

ELISA: Peptide ELISA: antibody detection limit dilution 1:16000. IHC: In paraffin embedded Human Kidney shows Brush Border staining in PCT. Recommended concentration, 2-3ug/ml. WB: Approx 37kDa band observed in Human Liver and Human Placenta lysates. In transfected HEK293 transiently expressing Human AKR1A1 a band of approx. 40kDa is observed. This band is not observed in the non-transfected HEK293. (calculated MW of 36.6kDa according to NP_006057.1 and NP_697021.1). Recommended concentration: 0.1-0.3 µg/ml.

Protein Sequence

DAGHPLYPFNDPY

Clonality

Polyclonal

MW

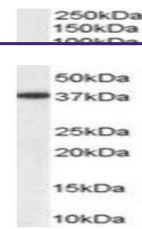
36.6

Entrez
[10327](#)
Dilution Range

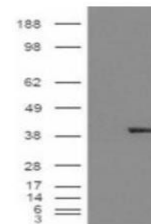
ELISA: 1:16000, WB: 0.1-0.3 µg/ml, IHC-P: 5 µg/ml

Expiration Date

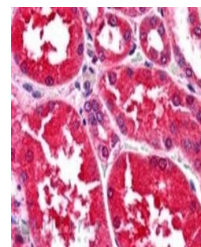
12 months from date of receipt.



Western blot analysis of Human Liver lys...



Western blot analysis of HEK293 lysate u...



Immunohistochemical staining of Human Ki...