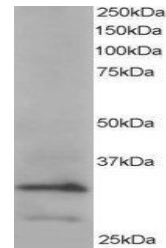


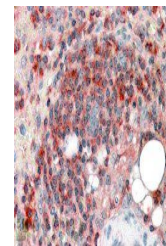
## Product Datasheet

### ARPC2 antibody (orb18679)

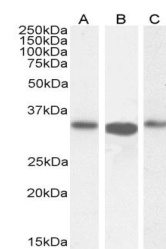
<b>Description</b>	Goat polyclonal antibody to ARPC2
<b>Species/Host</b>	Goat
<b>Reactivity</b>	Bovine, Canine, Human, Mouse, Rat
<b>Conjugation</b>	Unconjugated
<b>Tested Applications</b>	ELISA, IF, IHC, WB
<b>Target</b>	ARPC2
<b>Preservatives</b>	Supplied at 0.5 mg/ml in Tris saline, 0.02% sodium azide, pH 7.3 with 0.5% bovine serum albumin. Aliquot and store at -20°C. Minimize freezing and thawing.
<b>Storage</b>	Aliquot and store at -20°C. Minimize freezing and thawing.
<b>Note</b>	For research use only
<b>Application notes</b>	ELISA: Peptide ELISA: antibody detection limit dilution 1:32000.IHC: In paraffin embedded Human Spleen shows cytoplasm staining in some splenocytes in and around a T-cell area. Recommended concentration, 3-5ug/ml.WB: Approx 33-34kDa band observed in Hela and Human Skeletal Muscle lysates (predicted MW of 34kDa according to NP_005722). Recommended for use at 0.1-0.5 µg/ml.
<b>Protein Sequence</b>	EMKTITGKTFSSR
<b>Clonality</b>	Polyclonal
<b>MW</b>	34.3
<b>Entrez</b>	<b>10109</b>
<b>Dilution Range</b>	ELISA: 1:32000, WB: 0.1-0.5 µg/ml, IHC-P: 10 µg/ml
<b>Expiration Date</b>	12 months from date of receipt.



orb18679 staining (0.2ug/ml) of Hela lys...



orb18679 (3.8ug/ml) staining of paraffin...



Western blot analysis of CACO-2 (A), (0....