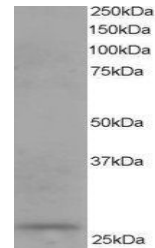


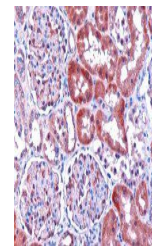
Product Datasheet

Dicarbonyl Reductase antibody (orb18673)

Description	Goat polyclonal to Dicarbonyl Reductase
Species/Host	Goat
Reactivity	Human
Conjugation	Unconjugated
Tested Applications	ELISA, IHC, WB
Target	Dicarbonyl Reductase
Preservatives	Supplied at 0.5 mg/ml in Tris saline, 0.02% sodium azide, pH 7.3 with 0.5% bovine serum albumin. Aliquot and store at -20°C. Minimize freezing and thawing.
Storage	Aliquot and store at -20°C. Minimize freezing and thawing.
Note	For research use only
Application notes	ELISA: Peptide ELISA: antibody detection limit dilution 1:32000.IHC: In paraffin embedded human kidney, stains membrane / cytoplasm in epithelial cells of renal glomeruli and tubules. Recommended concentration, 1-2ug/ml.WB: Approx 26kDa band observed in human kidney, liver and testes lysates (calculated MW of 25.9kDa according to NP_057370.1). Recommended for use at 0.1-0.3 µg/ml.
Protein Sequence	GSTLPVEGGFWAC
Clonality	Polyclonal
MW	25.9
Entrez	51181
Dilution Range	ELISA: 1:32000, WB: 0.1-0.3 µg/ml, IHC-P: 1-2µg/ml
Expiration Date	12 months from date of receipt.



orb18673 staining (0.1ug/ml) of human ki...



orb18673 (1ug/ml) staining of paraffin e...