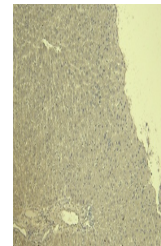


## Product Datasheet

### VDAC2 antibody (orb18662)

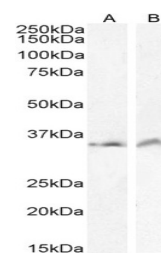
|                            |                                                                                                                                                             |
|----------------------------|-------------------------------------------------------------------------------------------------------------------------------------------------------------|
| <b>Description</b>         | Goat polyclonal antibody to VDAC2                                                                                                                           |
| <b>Species/Host</b>        | Goat                                                                                                                                                        |
| <b>Reactivity</b>          | Bovine, Canine, Human, Mouse, Porcine, Rat                                                                                                                  |
| <b>Conjugation</b>         | Unconjugated                                                                                                                                                |
| <b>Tested Applications</b> | ELISA, IHC, WB                                                                                                                                              |
| <b>Target</b>              | VDAC2 (C Terminus)                                                                                                                                          |
| <b>Preservatives</b>       | Supplied at 0.5 mg/ml in Tris saline, 0.02% sodium azide, pH 7.3 with 0.5% bovine serum albumin. Aliquot and store at -20°C. Minimize freezing and thawing. |
| <b>Concentration</b>       | 1-3 µg/ml                                                                                                                                                   |
| <b>Storage</b>             | Aliquot and store at -20°C. Minimize freezing and thawing.                                                                                                  |
| <b>Note</b>                | For research use only                                                                                                                                       |
| <b>Application notes</b>   | ELISA: Peptide ELISA: antibody detection limit dilution 1:64000.                                                                                            |
| <b>Protein Sequence</b>    | GHKVGLALELEA                                                                                                                                                |
| <b>Clonality</b>           | Polyclonal                                                                                                                                                  |
| <b>MW</b>                  | 31.6; 33.3; 27.4                                                                                                                                            |
| <b>Entrez</b>              | <a href="#">7417</a>                                                                                                                                        |
| <b>Dilution Range</b>      | ELISA: 1:16000, WB: 0.3-1 µg/ml                                                                                                                             |
| <b>Expiration Date</b>     | 12 months from date of receipt.                                                                                                                             |



orb18662  
Negative  
Control  
showing  
staini...



orb18662  
(6µg/ml)  
staining of  
paraffin ...



orb18662  
(1ug/ml)  
staining of  
CaCo-2 (A)...