

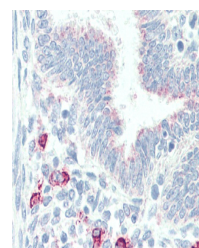
## Product Datasheet

### MPG antibody (orb18659)

<b>Description</b>	Goat polyclonal antibody to MPG
<b>Species/Host</b>	Goat
<b>Reactivity</b>	Human
<b>Conjugation</b>	Unconjugated
<b>Tested Applications</b>	ELISA, IHC, WB
<b>Target</b>	MPG
<b>Preservatives</b>	Supplied at 0.5 mg/ml in Tris saline, 0.02% sodium azide, pH 7.3 with 0.5% bovine serum albumin. Aliquot and store at -20°C. Minimize freezing and thawing.
<b>Storage</b>	Aliquot and store at -20°C. Minimize freezing and thawing.
<b>Note</b>	For research use only
<b>Application notes</b>	ELISA: Peptide ELISA: antibody detection limit dilution 1:1000.WB: Approx 37kDa band observed in lysates of HEK293 and K562 (calculated MW of 32.9kDa according to NP_002425.2). Recommended concentration: 1-3 µg/ml.
<b>Protein Sequence</b>	SVVDRVAEQDTQA
<b>Clonality</b>	Polyclonal
<b>MW</b>	32.9; 32.2; 30.8
<b>Entrez</b>	<a href="#">4350</a>
<b>Dilution Range</b>	ELISA: 1:1000, WB: 1-3 µg/ml, IHC-P: 5 µg/ml
<b>Expiration Date</b>	12 months from date of receipt.



orb18659 staining (1µg/ml) of HEK293 lys...



Immunohistochemical staining of Human Ut...