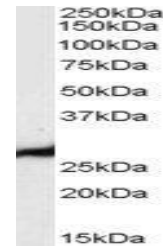


Product Datasheet

PGAM2 antibody (orb18654)

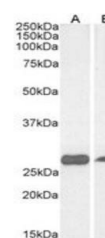
Description	Goat polyclonal to PGAM2
Species/Host	Goat
Reactivity	Bovine, Canine, Human, Mouse, Porcine, Rat
Conjugation	Unconjugated
Tested Applications	ELISA, WB
Target	PGAM1 / PGAM2 / PGAM4
Preservatives	Supplied at 0.5 mg/ml in Tris saline, 0.02% sodium azide, pH 7.3 with 0.5% bovine serum albumin. Aliquot and store at -20°C. Minimize freezing and thawing.
Storage	Aliquot and store at -20°C. Minimize freezing and thawing.
Note	For research use only
Application notes	Please note this antibody is expected to recognize the products of 3 highly similar genes.ELISA: Peptide ELISA: antibody detection limit dilution 1:128000.WB: Approx 28kDa band observed in Human Liver and Human Brain lysates (calculated MW of 28.8kDa according to NP_002620.1, NP_000281.2, NP_001025062.1). Recommended concentration: 0.01-0.03 µg/ml.
Protein Sequence	KAMEAVAAQGKAKK
Clonality	Polyclonal
MW	28.8; 28.8; 28.8
Entrez	441531 , 5223 , 5224
Dilution Range	ELISA: 1:128000, WB: 0.05-0.15 µg/ml
Expiration Date	12 months from date of receipt.



Western blot analysis of human liver lys...



Western blot analysis of human liver lys...



Western blot analysis of Human Cerebellu...