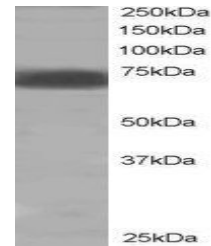


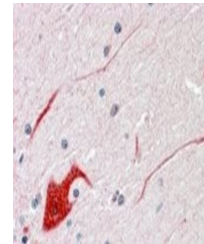
Product Datasheet

PTPN11 antibody (orb18653)

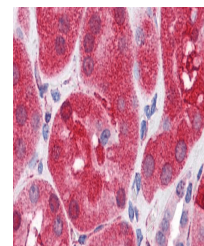
| | |
|----------------------------|--|
| Description | Goat polyclonal antibody to PTPN11 |
| Species/Host | Goat |
| Reactivity | Bovine, Human, Mouse, Porcine, Rat |
| Conjugation | Unconjugated |
| Tested Applications | ELISA, FC, IF, WB |
| Target | SHP2 / PTPN11 |
| Preservatives | Supplied at 0.5 mg/ml in Tris saline, 0.02% sodium azide, pH 7.3 with 0.5% bovine serum albumin. Aliquot and store at -20°C. Minimize freezing and thawing. |
| Storage | Aliquot and store at -20°C. Minimize freezing and thawing. |
| Note | For research use only |
| Application notes | ELISA: Peptide ELISA: antibody detection limit dilution 1:32000.WB: Approx 70kDa band observed in Human Skeletal Muscle lysates and in lysates of cell line HEK293 (calculated MW of 68.0kDa according to NP_002825.3). In transfected HEK293 transiently expressing PTPN11 bands of approx. 70kDa and 49kDa are observed. These bands are not observed in the non-transfected HEK293. Recommended for use at 1-3 µg/ml. |
| Protein Sequence | YENVGLMQQKFSR |
| Clonality | Polyclonal |
| MW | 68.0; 68.4 |
| Entrez | 5781 |
| Dilution Range | ELISA: 1:128000, WB: 1-3 µg/ml, IHC-P: 10ug/ml |
| Expiration Date | 12 months from date of receipt. |



Western blot analysis of human muscle ly...



Immunohistochemical staining of Human Ce...



Immunohistochemical staining of Human Ki...