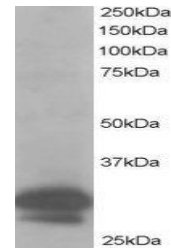


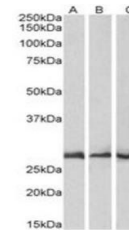
## Product Datasheet

### CAPZB antibody (orb18652)

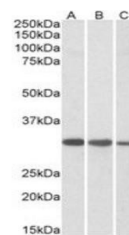
<b>Description</b>	Goat polyclonal antibody to CAPZB
<b>Species/Host</b>	Goat
<b>Reactivity</b>	Bovine, Canine, Human, Mouse, Porcine, Rat
<b>Conjugation</b>	Unconjugated
<b>Tested Applications</b>	ELISA, WB
<b>Target</b>	CAPZB
<b>Preservatives</b>	Supplied at 0.5 mg/ml in Tris saline, 0.02% sodium azide, pH 7.3 with 0.5% bovine serum albumin. Aliquot and store at -20°C. Minimize freezing and thawing.
<b>Storage</b>	Aliquot and store at -20°C. Minimize freezing and thawing.
<b>Note</b>	For research use only
<b>Application notes</b>	ELISA: Peptide ELISA: antibody detection limit dilution 1:32000.WB: Approx 30kDa band observed in Hela, Jurkat and Placenta lysate (predicted MW of 31kDa according to NP_004921). Recommended for use at 0.5-2 µg/ml.
<b>Protein Sequence</b>	NDLVEALKRKQQC
<b>Clonality</b>	Polyclonal
<b>MW</b>	30.6
<b>Entrez</b>	<a href="#">832</a>
<b>Dilution Range</b>	ELISA: 1:32000, WB: 0.1-0.3 µg/ml
<b>Expiration Date</b>	12 months from date of receipt.



Western blot analysis of Hela lysate using CAPZB antibody (orb18652).



Western blot analysis of Mouse, Rat and Placenta lysate using CAPZB antibody (orb18652).



Western blot analysis of Jurkat (Lane 1) using CAPZB antibody (orb18652).