
Product Datasheet

PEBP1 antibody (orb18651)

Description

Goat polyclonal antibody to PEBP1

Species/Host

Goat

Reactivity

Bovine, Canine, Human, Mouse, Rat

Conjugation

Unconjugated

Tested

ELISA, IHC, WB

Applications
Target

PEBP1

Preservatives

Supplied at 0.5 mg/ml in Tris saline, 0.02% sodium azide, pH 7.3 with 0.5% bovine serum albumin. Aliquot and store at -20°C. Minimize freezing and thawing.

Storage

Aliquot and store at -20°C. Minimize freezing and thawing.

Note

For research use only

Application notes

ELISA: Peptide ELISA: antibody detection limit dilution 1:16000. IHC: In paraffin embedded Human Brain (Cortex) shows staining near sectect nuclei. Recommended concentration, 1-2ug/ml. WB: Approx 22kDa band observed in lysates of cell lines HEK293, A549 and HepG2 (calculated MW of 21.1kDa according to NP_002558.1). Recommended concentration: 0.01-0.03 µg/ml. A customer has reported the 22kDa in Rat Hippocampus using this antibody.

Protein Sequence

DYVPKLYEQLSGK

Clonality

Polyclonal

MW

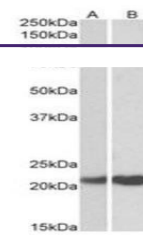
21.1

Entrez
5037
Dilution Range

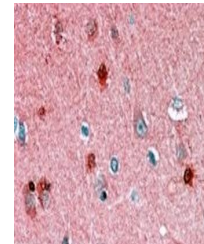
ELISA: 1:32000, WB: 0.5-2 µg/ml, IHC-P: 5 µg/ml

Expiration Date

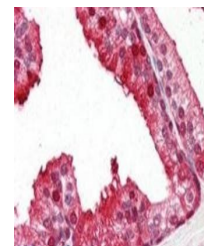
12 months from date of receipt.



Western blot analysis of Human Cerebellu...



Immunohistochemical staining of Human Co...



Immunohistochemical staining of Human Pr...