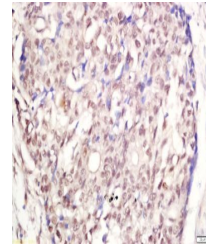


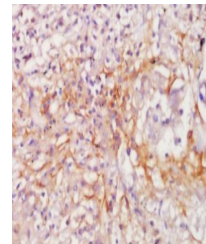
Product Datasheet

VEGFR2 antibody (orb186489)

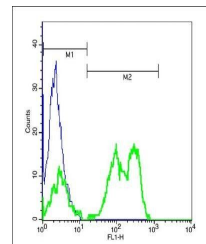
| | |
|----------------------------|--|
| Description | VEGFR2 antibody |
| Species/Host | Rabbit |
| Reactivity | Human |
| Conjugation | Unconjugated |
| Tested Applications | FC, IHC-P |
| Immunogen | KLH conjugated synthetic peptide derived from human VEGFR2 (101-200/1356 aa) |
| Target | VEGFR2 |
| Preservatives | 0.01M TBS(pH7.4) with 1% rAlbumin, 0.03% Proclin300 and 50% Glycerol. |
| Form/Appearance | Liquid |
| Concentration | 1mg/ml |
| Storage | Shipped at 4°C. Store at -20 °C for one year. Avoid repeated freeze/thaw cycles. |
| Note | For research use only |
| Isotype | IgG |
| Clonality | Polyclonal |
| MW | 147 kDa |
| Uniprot ID | P35968 |
| Dilution Range | IHC-P=1:100-500, Flow-Cyt=1µg/Test, WB=1:500-2000, IHC-F=1:100-500, ELISA=1:5000-10000 |
| Expiration Date | 12 months from date of receipt. |



Immunohistochemical staining of human es...



Immunohistochemical staining of human lu...



Flow cytometric analysis of SP2/0-B Lymph...