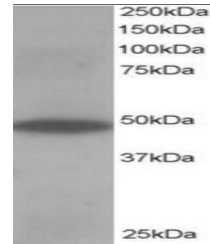


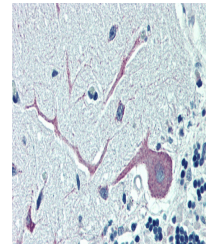
Product Datasheet

OSBPL1A antibody (orb18644)

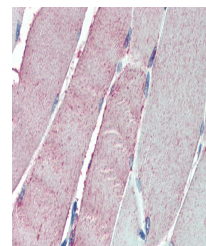
Description	Goat polyclonal antibody to OSBPL1A
Species/Host	Goat
Reactivity	Bovine, Canine, Human, Mouse, Rat
Conjugation	Unconjugated
Tested Applications	ELISA, IHC, WB
Target	ORP1
Preservatives	Supplied at 0.5 mg/ml in Tris saline, 0.02% sodium azide, pH 7.3 with 0.5% bovine serum albumin. Aliquot and store at -20°C. Minimize freezing and thawing.
Concentration	5 µg/ml
Storage	Aliquot and store at -20°C. Minimize freezing and thawing.
Note	For research use only
Application notes	ELISA: Peptide ELISA: antibody detection limit dilution 1:16000.WB: Approx 48kDa band observed in Human Skeletal Muscle lysates (predicted MW of 50kDa according to NP_060500). Recommended for use at 0.5-2 µg/ml.
Protein Sequence	YWDRNYFNLPDIY
Clonality	Polyclonal
MW	50.3; 108
Entrez	114876
Dilution Range	ELISA: 1:16000, WB: 0.5-2 µg/ml, IHC-P: 5 µg/ml
Expiration Date	12 months from date of receipt.



Western blot analysis of Human Muscle ly...



Immunohistochemical staining of Human Ce...



Immunohistochemical staining of Human Sk...