

---

## Product Datasheet

### VPS35 antibody (orb18631)

**Description**

Goat polyclonal antibody to VPS35

**Species/Host**

Goat

**Reactivity**

Bovine, Human, Mouse, Rat

**Conjugation**

Unconjugated

**Tested Applications**

ELISA, IF, IHC, WB

**Target**

VPS35 / MEM3

**Preservatives**

Supplied at 0.5 mg/ml in Tris saline, 0.02% sodium azide, pH7.3 with 0.5% bovine serum albumin.

**Concentration**

1-3 µg/ml

**Storage**

Aliquot and store at -20°C. Minimize freezing and thawing.

**Note**

For research use only

**Application notes**

ELISA: Peptide ELISA: antibody detection limit dilution 1:16000. IHC: In paraffin embedded Human Testis, shows positive staining in Leydig cells, and cytoplasmic staining (dot-like) of some epithelial cells of the epididymis and of the rete testis. WB: Approx 90kDa band observed in Human Brain and Testis lysates (predicted MW of 91kDa according to NP\_060676.2). Recommended for use at 1-3 µg/ml. Experiment Notes: Immunofluorescence: Staining of VPS35 (red) in human melanoma cells 1205LU: Please see Scott KL et al.; Nature. 2009 Jun 25;459(7250):1085-90.; PMID: 19553991.

**Protein Sequence**

SPESEGPIYEGLLI

**Clonality**

Polyclonal

**MW**

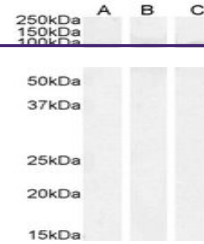
91.7

**Entrez**
[55737](#)
**Dilution Range**

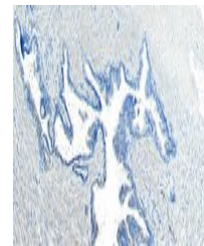
ELISA: 1:128000, WB: 1.0-3.0 µg/ml, IHC-P: 5-8 µg/ml

**Expiration Date**

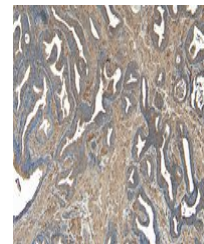
12 months from date of receipt.



Western blot analysis of Human (A) Mouse...



Immunohistochemical staining of Human Pr...



Immunohistochemical staining of Human Pr...