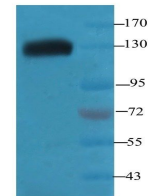


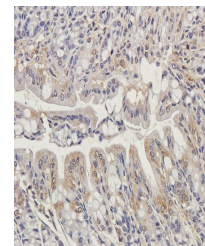
Product Datasheet

TRAPPC11 antibody (orb186301)

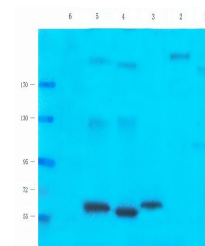
Description	TRAPPC11 antibody
Species/Host	Rabbit
Conjugation	Unconjugated
Tested Applications	IHC-P, WB
Immunogen	KLH conjugated synthetic peptide derived from human TRAPPC11. Please contact us for the exact immunogen sequence. The peptide is available as orb12945.
Target	TRAPPC11
Form/Appearance	10 mM PBS, 0.02% sodium azide
Concentration	- 100 µg (in 200 µl): 0.5 mg/ml- 200 µg (in 400 µl): 0.5 mg/ml
Storage	Store at 4°C for up to two weeks. For long term storage, aliquot and store at -20°C, avoid freeze/thaw cycles
Note	For research use only
Isotype	IgG
Clonality	Polyclonal
Purity	Polyclonal antibodies are purified by peptide affinity chromatography
MW	129 kDa
Uniprot ID	Q7Z392 , D3ZH18
NCBI	068761
Dilution Range	WB: 1:200-1500, IHC-P: 1:100-500
Expiration Date	12 months from date of receipt.



Western blot mouse brain using TRAPPC11 ...



Immunohistochemical staining of guinea p...



Western blot analysis of rat stomach (la...