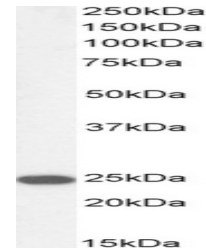


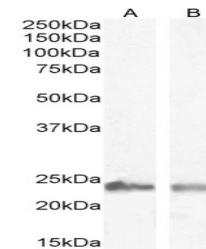
## Product Datasheet

### TAGLN antibody (orb18630)

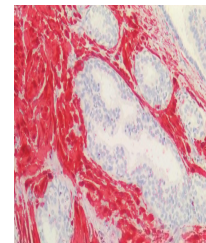
<b>Description</b>	Goat polyclonal to TAGLN
<b>Species/Host</b>	Goat
<b>Reactivity</b>	Bovine, Canine, Human, Mouse, Rat
<b>Conjugation</b>	Unconjugated
<b>Tested Applications</b>	ELISA, IHC, WB
<b>Target</b>	SM22 Alpha / Transgelin
<b>Preservatives</b>	Supplied at 0.5 mg/ml in Tris saline, 0.02% sodium azide, pH 7.3 with 0.5% bovine serum albumin. Aliquot and store at -20°C. Minimize freezing and thawing.
<b>Storage</b>	Aliquot and store at -20°C. Minimize freezing and thawing.
<b>Note</b>	For research use only
<b>Application notes</b>	NP_003177.2 and NP_001001522.1 represent identical protein.ELISA: Peptide ELISA: antibody detection limit dilution 1:32000.WB: Approx 24kDa band observed in Human Placenta lysates (calculated MW of 22.6kDa according to NP_003177.2 and NP_001001522.1). Recommended concentration: 0.01-0.03 µg/ml.
<b>Protein Sequence</b>	MTGYGRPRQIIS
<b>Clonality</b>	Polyclonal
<b>MW</b>	22.6
<b>Entrez</b>	<b>6876</b>
<b>Dilution Range</b>	ELISA: 1:4000, WB: 0.1-1 µg/ml, IHC-P: 2.5µg/ml
<b>Expiration Date</b>	12 months from date of receipt.



orb18630 (0.03µg/ml) staining of Mouse ...



orb18630 (0.03µg/ml) staining of Human ...



Immunohistochemical staining of Human Pr...