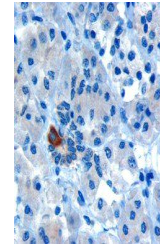


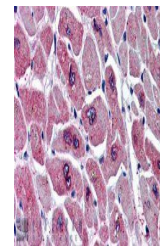
Product Datasheet

PARD6A antibody (orb18626)

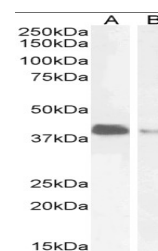
Description	Goat polyclonal antibody to PARD6A
Species/Host	Goat
Reactivity	Human
Conjugation	Unconjugated
Tested Applications	ELISA, FC, IHC, WB
Target	PAR6alpha / PARD6A
Preservatives	Supplied at 0.5 mg/ml in Tris saline, 0.02% sodium azide, pH 7.3 with 0.5% bovine serum albumin. Aliquot and store at -20°C. Minimize freezing and thawing.
Storage	Aliquot and store at -20°C. Minimize freezing and thawing.
Note	For research use only
Application notes	ELISA: Peptide ELISA: antibody detection limit dilution 1:8000.IHC: In paraffin embedded Human Pancreas, shows strong cytoplasmic staining in rare cells of intralobular ducts. Recommended concentration, 10ug/ml. Also tested in paraffin embedded Human Heart where it shows speckled staining on myocardial fibres in transverWB: Preliminary experiments gave no signal but low background in Human Brain and Pancreas extracts at up to 1 µg/ml.
Protein Sequence	GSRIRGDGSGFSL
Clonality	Polyclonal
MW	37.4; 37.3
Entrez	50855
Dilution Range	ELISA: 1:8000, WB: 1-3 µg/ml, IHC-P: 5-10 µg/ml
Expiration Date	12 months from date of receipt.



orb18626 (10ug/ml) staining of paraffin ...



orb18626 (5ug/ml) staining of paraffin e...



Western blot analysis of Jurkat (Lane 1)...