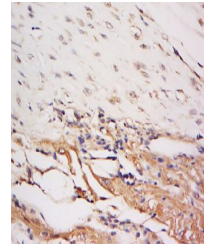


Product Datasheet

Smad2 (phospho-Ser250) antibody (orb186236)

Description	Smad2 (phospho-Ser250) antibody
Species/Host	Rabbit
Reactivity	Human, Mouse
Conjugation	Unconjugated
Tested Applications	FC, WB
Immunogen	KLH conjugated synthesised phosphopeptide derived from human Smad2 around the phosphorylation site of Ser250 (EL(p-S)PT)
Target	phospho-Smad2 (Ser250)
Preservatives	0.01M TBS(pH7.4) with 1% rAlbumin, 0.03% Proclin300 and 50% Glycerol.
Form/Appearance	Liquid
Concentration	1mg/ml
Storage	Shipped at 4°C. Store at -20 °C for one year. Avoid repeated freeze/thaw cycles.
Note	For research use only
Isotype	IgG
Clonality	Polyclonal
MW	58 kDa
Uniprot ID	Q15796
Dilution Range	WB=1:500-2000, Flow-Cyt=1µg/Test
Expiration Date	12 months from date of receipt.



Immunohistochemical staining of Rat hear...