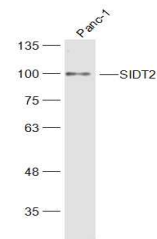


Product Datasheet

SIDT2 antibody (orb186138)

Description	SIDT2 antibody
Species/Host	Rabbit
Reactivity	Human
Conjugation	Unconjugated
Tested Applications	WB
Immunogen	KLH conjugated synthetic peptide derived from human SIDT2 (201-300/832 aa)
Target	SIDT2
Preservatives	0.01M TBS(pH7.4) with 1% rAlbumin, 0.03% Proclin300 and 50% Glycerol.
Form/Appearance	Liquid
Concentration	1mg/ml
Storage	Shipped at 4°C. Store at -20 °C for one year. Avoid repeated freeze/thaw cycles.
Note	For research use only
Isotype	IgG
Clonality	Polyclonal
MW	93 kDa
Uniprot ID	Q8NBJ9
Dilution Range	WB=1:500-2000
Expiration Date	12 months from date of receipt.



Sample:
Panc-1(Human)
Cell Lysate at
30 ...