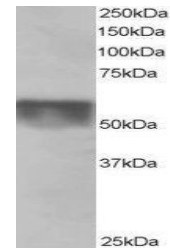


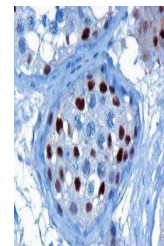
## Product Datasheet

### KPNA4 antibody (orb18608)

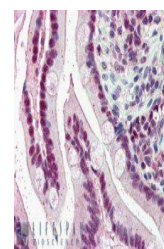
<b>Description</b>	Goat polyclonal antibody to KPNA4
<b>Species/Host</b>	Goat
<b>Reactivity</b>	Bovine, Canine, Human, Mouse, Rat
<b>Conjugation</b>	Unconjugated
<b>Tested Applications</b>	ELISA, WB
<b>Target</b>	KPNA4 / IPOA3
<b>Preservatives</b>	Supplied at 0.5 mg/ml in Tris saline, 0.02% sodium azide, pH 7.3 with 0.5% bovine serum albumin. Aliquot and store at -20°C. Minimize freezing and thawing.
<b>Storage</b>	Aliquot and store at -20°C. Minimize freezing and thawing.
<b>Note</b>	For research use only
<b>Application notes</b>	ELISA: Peptide ELISA: antibody detection limit dilution 1:32000.IHC: In paraffin embedded Human Testis, shows strong nuclear staining of some cells in the seminiferous tubules. Recommended concentration, 3ug/ml. In paraffin embedded Human Small Intestine shows pixulate staining in nuclei of enterocytes. Recommended concenWB: Approx 55-60kDa band observed in Human Testis and Ovary lysates (predicted size of approx. 58kDa according to NP_002259.1). Recommended for use at 0.2-1 µg/ml
<b>Protein Sequence</b>	NSSANVPTEGFQF
<b>Clonality</b>	Polyclonal
<b>MW</b>	57.9
<b>Entrez</b>	<b>3840</b>
<b>Dilution Range</b>	ELISA: 1:128000, WB: 0.5-1 µg/ml
<b>Expiration Date</b>	12 months from date of receipt.



orb18608 staining (0.5ug/ml) of Human Te...



orb18608 (3ug/ml) staining of paraffin e...



orb18608 (5ug/ml) staining of paraffin e...