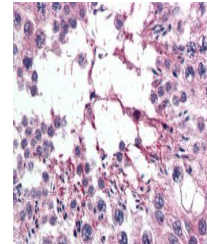


## Product Datasheet

### XPO7 antibody (orb18605)

|                            |  |
|----------------------------|--|
| <b>Description</b>         | Goat polyclonal antibody to XPO7   |
| <b>Species/Host</b>        | Goat   |
| <b>Reactivity</b>          | Bovine, Canine, Human, Mouse, Porcine  |
| <b>Conjugation</b>         | Unconjugated   |
| <b>Tested Applications</b> | ELISA, IHC, WB   |
| <b>Target</b>              | RANBP16 / Exportin 7   |
| <b>Preservatives</b>       | Supplied at 0.5 mg/ml in Tris saline, 0.02% sodium azide, pH 7.3 with 0.5% bovine serum albumin. Aliquot and store at -20°C. Minimize freezing and thawing.  |
| <b>Storage</b>             | Aliquot and store at -20°C. Minimize freezing and thawing.   |
| <b>Note</b>                | For research use only  |
| <b>Application notes</b>   | ELISA: Peptide ELISA: antibody detection limit dilution 1:32000.WB: Approx 110kDa band observed in Human Testis and Hela lysates (predicted size of approx. 124kDa according to NP_055839). Recommended for use at 0.5-1 µg/ml |
| <b>Protein Sequence</b>    | NSTYGVNSNDMMMS   |
| <b>Clonality</b>           | Polyclonal   |
| <b>MW</b>                  | 125; 124; 124  |
| <b>Entrez</b>              | <a href="#">23039</a>  |
| <b>Dilution Range</b>      | ELISA: 1:32000, WB: 0.5-1 µg/ml, IHC-P: 5 µg/ml  |
| <b>Expiration Date</b>     | 12 months from date of receipt.  |



Immunohistochemical staining of Human Testis



Western blot analysis of Hela lysate using XPO7 antibody