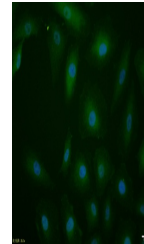


## Product Datasheet

### SP1 (phospho-Thr739) antibody (orb186031)

<b>Description</b>	SP1 (phospho-Thr739) antibody
<b>Species/Host</b>	Rabbit
<b>Reactivity</b>	Human
<b>Conjugation</b>	Unconjugated
<b>Tested Applications</b>	ICC
<b>Immunogen</b>	KLH conjugated synthesised phosphopeptide derived from human SP1 around the phosphorylation site of Thr739 (TA(p-T)PS)
<b>Target</b>	phospho-SP1 (Thr739)
<b>Preservatives</b>	0.01M TBS(pH7.4) with 1% rAlbumin, 0.03% Proclin300 and 50% Glycerol.
<b>Form/Appearance</b>	Liquid
<b>Concentration</b>	1mg/ml
<b>Storage</b>	Maintain refrigerated at 2-8°C for up to 2 weeks. For long term storage store at -20°C in small aliquots to prevent freeze-thaw cycles.
<b>Note</b>	For research use only
<b>Isotype</b>	IgG
<b>Clonality</b>	Polyclonal
<b>MW</b>	81 kDa
<b>Uniprot ID</b>	<b>P08047</b>
<b>Dilution Range</b>	ICC=1:100
<b>Expiration Date</b>	12 months from date of receipt.



ICC analysis of A549 cell using phospho-...