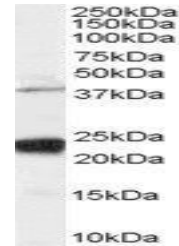


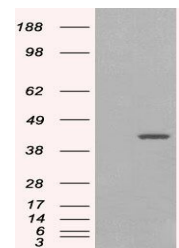
Product Datasheet

GIPC1 antibody (orb18596)

| | |
|----------------------------|--|
| Description | Goat polyclonal antibody to GIPC1 |
| Species/Host | Goat |
| Reactivity | Bovine, Human, Mouse, Rat |
| Conjugation | Unconjugated |
| Tested Applications | ELISA, WB |
| Target | GIPC1 / NIP |
| Preservatives | Supplied at 0.5 mg/ml in Tris saline, 0.02% sodium azide, pH 7.3 with 0.5% bovine serum albumin. Aliquot and store at -20°C. Minimize freezing and thawing. |
| Storage | Aliquot and store at -20°C. Minimize freezing and thawing. |
| Note | For research use only |
| Application notes | ELISA: Peptide ELISA: antibody detection limit dilution 1:128000. WB: Approx 38kDa and strong 23-24kDa bands observed in lysates of cell line HeLa, and approx 24kDa also observed in Human Pancreas, Kidney and Muscle lysates (calculated MW of 36.0kDa according to NP_005707.1, NP_974197.1 and NP_974199.1 and 26.1kDa according to NP_974198.1 and NP_974223.1). In transfected HEK293 transiently expressing GIPC1 isoform 1 a band of approx. 40kDa is observed. This band is not observed in the non-transfected HEK293. Recommended concentration: 0.03-0.1 µg/ml. |
| Protein Sequence | GAIGDAKVGRY |
| Clonality | Polyclonal |
| MW | 36.0; 26.1 |
| Entrez | 10755 |
| Dilution Range | ELISA: 1:128000, WB: 0.03-0.1 µg/ml |
| Expiration Date | 12 months from date of receipt. |



orb18596 staining (0.03ug/ml) of human H...



HEK293 overexpressing GIPC1 isoform 1 (R...