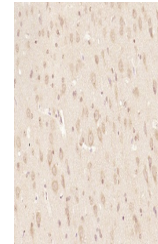


Product Datasheet

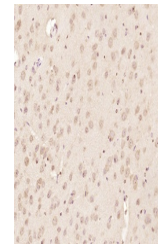
RRAGA antibody (orb185951)

Description	RRAGA antibody
Species/Host	Rabbit
Reactivity	Mouse, Rat
Conjugation	Unconjugated
Tested Applications	IHC-P
Immunogen	KLH conjugated synthetic peptide derived from human RRAGA and RRAGB (231-313/313 aa)
Target	RRAGA + RRAGB
Preservatives	0.01M TBS(pH7.4) with 1% rAlbumin, 0.03% Proclin300 and 50% Glycerol.
Form/Appearance	Liquid
Concentration	1mg/ml
Storage	Maintain refrigerated at 2-8°C for up to 2 weeks. For long term storage store at -20°C in small aliquots to prevent freeze-thaw cycles.
Note	For research use only
Isotype	IgG
Clonality	Polyclonal
MW	37 kDa
Uniprot ID	Q7L523
Dilution Range	IHC-P=1:100-500
Expiration Date	12 months from date of receipt.



IHC-P analysis of rat brain using RRAGA

...



IHC-P analysis of mouse brain using RRAG...