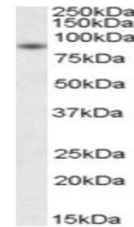


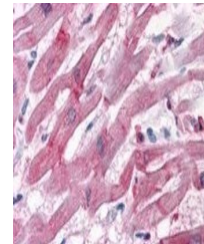
## Product Datasheet

### BAG3 antibody (orb18594)

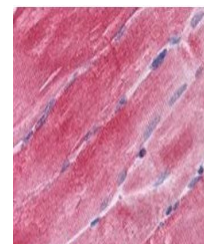
<b>Description</b>	Goat polyclonal antibody to BAG3
<b>Species/Host</b>	Goat
<b>Reactivity</b>	Human
<b>Conjugation</b>	Unconjugated
<b>Tested Applications</b>	ELISA, IHC, WB
<b>Target</b>	BAG3 / BIS/ CAIR1
<b>Preservatives</b>	Supplied at 0.5 mg/ml in Tris saline, 0.02% sodium azide, pH 7.3 with 0.5% bovine serum albumin. Aliquot and store at -20°C. Minimize freezing and thawing.
<b>Storage</b>	Aliquot and store at -20°C. Minimize freezing and thawing.
<b>Note</b>	For research use only
<b>Application notes</b>	ELISA: Peptide ELISA: antibody detection limit dilution 1:8000.WB: Approx 85kDa band observed in Human Skeletal Muscle lysates (calculated MW of 61.6kDa according to NP_004272.2). The observed molecular weight corresponds to earlier findings in literature with different antibodies (Iwasaki et al, Cancer Res. 2007 Nov 1;67(21):10252-9. PMID: 17974966). Recommended concentration: 0.1-0.3 µg/ml.
<b>Protein Sequence</b>	SSMTDTPGNPAAP
<b>Clonality</b>	Polyclonal
<b>MW</b>	61.6
<b>Entrez</b>	<b>9531</b>
<b>Dilution Range</b>	ELISA: 1:2000, WB: 0.3-1 µg/ml, IHC-P: 3.75 µg/ml
<b>Expiration Date</b>	12 months from date of receipt.



Western blot analysis of Human Skeletal ...



Immunohistochemical staining of Human He...



Immunohistochemical staining of Human Sk...