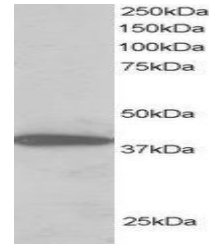


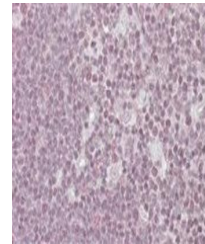
Product Datasheet

PPP1R8 antibody (orb18573)

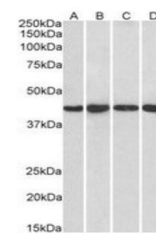
Description	Goat polyclonal antibody to PPP1R8
Species/Host	Goat
Reactivity	Bovine, Canine, Human, Mouse
Conjugation	Unconjugated
Tested Applications	ELISA, IHC, WB
Target	NIPP1 / PPP1R8
Preservatives	Supplied at 0.5 mg/ml in Tris saline, 0.02% sodium azide, pH 7.3 with 0.5% bovine serum albumin. Aliquot and store at -20°C. Minimize freezing and thawing.
Storage	Aliquot and store at -20°C. Minimize freezing and thawing.
Note	For research use only
Application notes	ELISA: Peptide ELISA: antibody detection limit dilution 1:32000.WB: Approx 40 kDa band observed in Human Lung and H460 cell extracts (predicted MW of 40kDa according to NP_054829). Recommended for use at 1-2 µg/ml.
Protein Sequence	EAWPGKKPTPSLLI
Clonality	Polyclonal
MW	13.3; 38.5; 22.7
Entrez	5511
Dilution Range	ELISA: 1:32000, WB: 0.3-1 µg/ml, IHC-P: 2.5-3.8 µg/ml
Expiration Date	12 months from date of receipt.



Western blot analysis of H460 lysate usi...



Immunohistochemical staining of Human Th...



Western blot analysis of Hela (Lane 1), ...