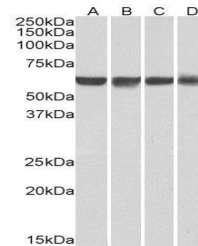


Product Datasheet

PTBP1 antibody (orb18567)

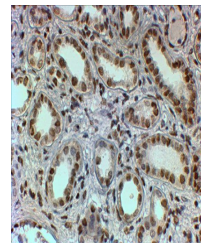
Description	Goat polyclonal antibody to PTBP1
Species/Host	Goat
Reactivity	Bovine, Canine, Human, Mouse, Porcine, Rat
Conjugation	Unconjugated
Tested Applications	ELISA, IHC, WB
Target	PTBP1 / PTB
Preservatives	Supplied at 0.5 mg/ml in Tris saline, 0.02% sodium azide, pH 7.3 with 0.5% bovine serum albumin. Aliquot and store at -20°C. Minimize freezing and thawing.
Storage	Aliquot and store at -20°C. Minimize freezing and thawing.
Note	For research use only
Application notes	ELISA: Peptide ELISA: antibody detection limit dilution 1:8000.IHC: In paraffin embedded Human Skin shows nuclear staining of keratinocytes. Recommended concentration, 5-10ug/ml.WB: Approx 55-60 kDa band observed in lysates of cell line Jurkat (calculated MW of 57.2kDa according to NP_114368.1). Recommended concentration: 1-3 µg/ml.
Protein Sequence	DGIVPDIAVGTKR
Clonality	Polyclonal
MW	59.6, 59.0, 57.2; 21.9
Dilution Range	ELISA: 1:32000, WB: 0.01-0.3 µg/ml, IHC-P: 2-4 µg/ml
Expiration Date	12 months from date of receipt.



Western blot analysis of staining of HeL...



Western blot analysis of staining of Hum...



Immunohistochemical analysis of paraffin...