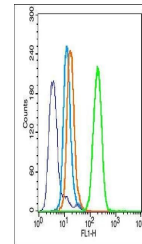


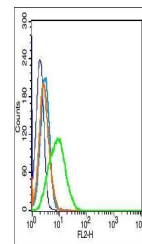
## Product Datasheet

# NFkB p65 (phospho-Ser281) antibody (orb185656)

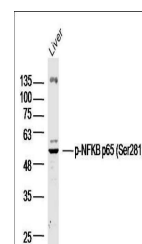
<b>Description</b>	NFkB p65 (phospho-Ser281) antibody
<b>Species/Host</b>	Rabbit
<b>Reactivity</b>	Human, Mouse
<b>Conjugation</b>	Unconjugated
<b>Tested Applications</b>	FC, WB
<b>Immunogen</b>	KLH conjugated synthesised phosphopeptide derived from human NFkB p65 around the phosphorylation site of Ser281 (EL(p-S)EP)
<b>Target</b>	phospho-NFkB p65 (Ser281)
<b>Preservatives</b>	0.01M TBS(pH7.4) with 1% rAlbumin, 0.03% Proclin300 and 50% Glycerol.
<b>Form/Appearance</b>	Liquid
<b>Concentration</b>	1mg/ml
<b>Storage</b>	Shipped at 4°C. Store at -20 °C for one year. Avoid repeated freeze/thaw cycles.
<b>Note</b>	For research use only
<b>Isotype</b>	IgG
<b>Clonality</b>	Polyclonal
<b>MW</b>	61 kDa
<b>Uniprot ID</b>	<a href="#">Q04206</a>
<b>Dilution Range</b>	WB=1:500-2000, Flow-Cyt=1µg/Test
<b>Expiration Date</b>	12 months from date of receipt.



Flow cytometric analysis of Green line C...



Flow cytometric analysis of Jurkat cells...



Western blot analysis of Mouse Liver Lys...