

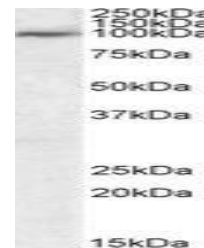
Product Datasheet

USP20 antibody (orb18564)

Description	Goat polyclonal antibody to USP20
Species/Host	Goat
Reactivity	Bovine, Canine, Human, Mouse, Porcine, Rat
Conjugation	Unconjugated
Tested Applications	ELISA, IHC, WB
Target	USP20 / VDU2
Preservatives	Supplied at 0.5 mg/ml in Tris saline, 0.02% sodium azide, pH 7.3 with 0.5% bovine serum albumin. Aliquot and store at -20°C. Minimize freezing and thawing.
Storage	Aliquot and store at -20°C. Minimize freezing and thawing.
Note	For research use only
Application notes	ELISA: Peptide ELISA: antibody detection limit dilution 1:32000.IHC: In paraffin embedded Human Lymph Node shows strongest staining in smooth muscle cells surrounding a vessel. Recommended concentration, 3 ug/ml.WB: Preliminary experiments gave no signal but low background in Human Liver extracts at up to 1 µg/ml. We would appreciate any feedback from people in the field - have any results been reported with other antibodies/lysates
Protein Sequence	HGEQKIEAETRAV
Clonality	Polyclonal
MW	102
Entrez	10868
Dilution Range	ELISA: 1:4000, WB: 1-3 µg/ml, IHC-P: 3 µg/ml
Expiration Date	12 months from date of receipt.



Immunohistochemical staining of Human Lymph Node



Western blot of Human Tonsil lysate