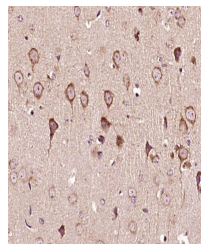


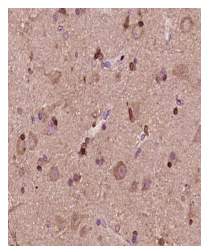
Product Datasheet

MEX3D antibody (orb185612)

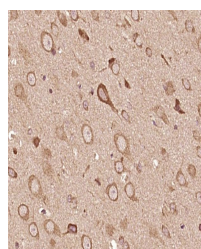
Description	MEX3D antibody
Species/Host	Rabbit
Reactivity	Human, Mouse, Rat
Conjugation	Unconjugated
Tested Applications	IHC-P, WB
Immunogen	KLH conjugated synthetic peptide derived from human MEX3D/RNF193 (201-300/651 aa)
Target	MEX3D/RNF193
Preservatives	0.01M TBS(pH7.4) with 1% rAlbumin, 0.03% Proclin300 and 50% Glycerol.
Form/Appearance	Liquid
Concentration	1mg/ml
Storage	Shipped at 4°C. Store at -20 °C for one year. Avoid repeated freeze/thaw cycles.
Note	For research use only
Isotype	IgG
Clonality	Polyclonal
MW	65 kDa
Uniprot ID	Q86XN8
Dilution Range	WB=1:500-2000, IHC-P=1:100-500
Expiration Date	12 months from date of receipt.



IHC-P image of mouse brain tissue using ...



Immunohistochemical staining of paraffin...



Immunohistochemical staining of rat brai...