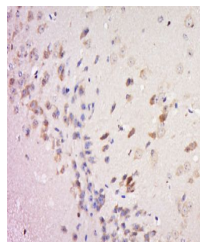


Product Datasheet

MCSF Receptor (phospho-Tyr561) antibody (orb185529)

Description	MCSF Receptor (phospho-Tyr561) antibody
Species/Host	Rabbit
Reactivity	Human
Conjugation	Unconjugated
Tested Applications	ELISA
Immunogen	KLH conjugated synthesised phosphopeptide derived from human MCSF Receptor around the phosphorylation site of Tyr561 (NS(p-Y)TF)
Target	phospho-MCSF Receptor (Tyr561)
Preservatives	0.01M TBS(pH7.4) with 1% rAlbumin, 0.03% Proclin300 and 50% Glycerol.
Form/Appearance	Liquid
Concentration	1mg/ml
Storage	Shipped at 4°C. Store at -20 °C for one year. Avoid repeated freeze/thaw cycles.
Note	For research use only
Isotype	IgG
Clonality	Polyclonal
MW	120 kDa
Uniprot ID	P07333
Expiration Date	12 months from date of receipt.



Immunohistochemical staining of Mouse
br...