
Product Datasheet

FOXC1 antibody (orb18545)

Description

Goat polyclonal antibody to FOXC1

Species/Host

Goat

Reactivity

Human, Mouse, Rat

Conjugation

Unconjugated

Tested

ELISA, FC, IF

Applications
Target

FOXC1 (C Term)

Preservatives

Supplied at 0.5 mg/ml in Tris saline, 0.02% sodium azide, pH 7.3 with 0.5% bovine serum albumin. Aliquot and store at -20°C. Minimize freezing and thawing.

Storage

Aliquot and store at -20°C. Minimize freezing and thawing.

Note

For research use only

Application notes

ELISA: Peptide ELISA: antibody detection limit dilution 1:32000. IHC: In paraffin embedded Human Kidney shows nuclear staining of some cells in the glomeruli. Recommended concentration, 3 ug/ml. WB: In transfected HEK293 transiently expressing full-length Human FOXC1 (myc and DYKDDDDK tagged), a band of approx. 75kDa was observed. No bands were observed in mock-transfected and the same band was observed using anti-DYKDDDDK tag antibody. Recommended concentration, 0.5-1µg/ml. An anonymous customer found positive results in WB on Human breast cancer cells (T47D).

Protein Sequence

RTSGAFVYDCSKF

Clonality

Polyclonal

MW

56.8

Entrez
[2296](#)
Dilution Range

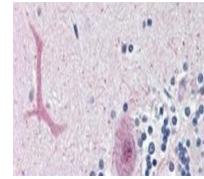
ELISA: 1:32000, IHC-P: 10ug/ml

Expiration Date

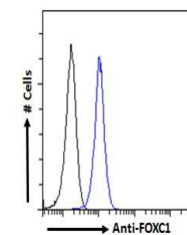
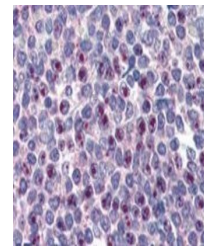
12 months from date of receipt.



Immunohistochemical staining of Human Ce...



Immunohistochemical staining of Human Sp...



Flow cytometric analysis of HEK293 cells...