
Product Datasheet

Alpha Amylase 1/AMY1A/AMY1B/AMY1C Antibody (orb18543)

Description

Alpha Amylase 1/AMY1A/AMY1B/AMY1C Antibody

Species/Host

Rabbit

Reactivity

Human, Mouse, Rat

Conjugation

Unconjugated

Tested Applications

IHC, WB

Immunogen

A synthetic peptide corresponding to a sequence at the N-terminus of human Alpha Amylase 1 (20-50aa NTQQGRTSIVHLFEWRWVDIALECERYLAPK), different from the related mouse sequence by five amino acids, and from the related rat sequence by six amino acids.

Form/Appearance

Lyophilized

Concentration

Adding 0.2 ml of distilled water will yield a concentration of 500 µg/ml.

Storage

Store at -20°C for one year from date of receipt. After reconstitution, at 4°C for one month. It can also be aliquotted and stored frozen at -20°C for six months. Avoid repeated freeze-thaw cycles.

Note

For research use only

Application notes

Tested Species: In-house tested species with positive results. Predicted Species: Species predicted to be fit for the product based on sequence similarities. By Heat: Boiling the paraffin sections in 10mM citrate buffer, pH6.0, for 20mins is required for the staining of formalin/paraffin sections. Other applications have not been tested. Optimal dilutions should be determined by end users. Add 0.2ml of distilled water will yield a concentration of 500ug/ml.

Isotype

Rabbit IgG

Clonality

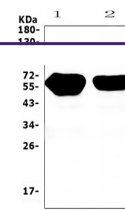
Polyclonal

MW

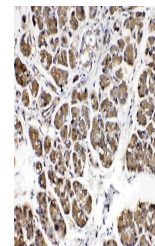
57768 MW

Uniprot ID
[P04745](#)
Expiration Date

12 months from date of receipt.



WB analysis of Amylase using anti-Amylas...



IHC analysis of Amylase using anti-Amyla...