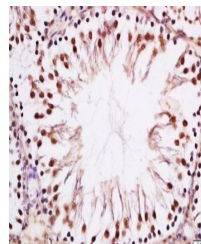


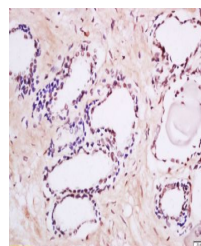
Product Datasheet

MAK (phospho-Tyr159) antibody (orb185427)

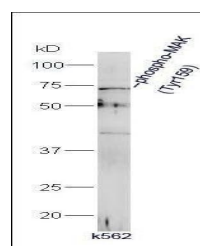
Description	MAK (phospho-Tyr159) antibody
Species/Host	Rabbit
Reactivity	Human, Mouse, Rat
Conjugation	Unconjugated
Tested Applications	WB
Immunogen	KLH conjugated synthesised phosphopeptide derived from human MAK around the phosphorylation site of Tyr159 (TD(p-Y)VS)
Target	phospho-MAK (Tyr159)
Preservatives	0.01M TBS(pH7.4) with 1% rAlbumin, 0.03% Proclin300 and 50% Glycerol.
Form/Appearance	Liquid
Concentration	1mg/ml
Storage	Shipped at 4°C. Store at -20 °C for one year. Avoid repeated freeze/thaw cycles.
Note	For research use only
Isotype	IgG
Clonality	Polyclonal
MW	71 kDa
Uniprot ID	P20794
Dilution Range	WB=1:500-2000
Expiration Date	12 months from date of receipt.



Immunohistochemical staining of rat test...



Immunohistochemical staining of human pr...



Western blot analysis of K562 Cell lysat...