
Product Datasheet

STAT3 antibody (orb18540)

Description

Goat polyclonal antibody to STAT3

Species/Host

Goat

Reactivity

Bovine, Human, Mouse, Rat

Conjugation

Unconjugated

Tested Applications

ELISA, FC, IF, IHC

Target

STAT3 (isoform 1 and 2)

Preservatives

Supplied at 0.5 mg/ml in Tris saline, 0.02% sodium azide, pH 7.3 with 0.5% bovine serum albumin. Aliquot and store at -20°C. Minimize freezing and thawing.

Concentration

4-8 µg

Storage

Aliquot and store at -20°C. Minimize freezing and thawing.

Note

For research use only

Application notes

ELISA: Peptide ELISA: antibody detection limit dilution 1:8000. IE: An anonymous customer found positive results in IF on Human HEK 293 cells. IF; An anonymous customer found positive results in IF on Rat glial processes and nuclei. IHC: In paraffin embedded Mouse Thymus shows preferential staining of the medulla over the cortex. Recommended concentration, 4-8µg/ml. WB: Approx. 90kDa band observed in lysates of NIH3T3 (calculated MW of 88.0kDa according to NP_644805.1 and of 88.1 according to NP_003141.2). Recommended concentration: 1-3 µg/ml.

Protein Sequence

DMELTSECATSPM

Clonality

Polyclonal

MW

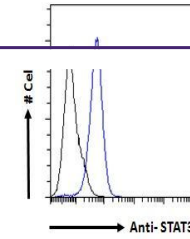
88.0; 88.1

Entrez
[6774](#)
Dilution Range

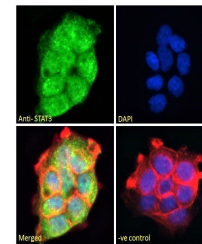
ELISA: 1:8000, WB: 2 µg/ml, IHC-P: 4-6 µg/ml

Expiration Date

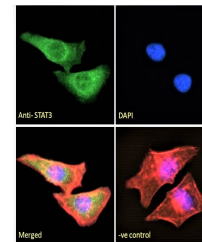
12 months from date of receipt.



Flow Cytometry analysis of A431 cells of...



Immunofluorescence analysis of A431 cell...



Immunofluorescence analysis of HeLa cell...