
Product Datasheet

FOX E1 antibody (orb18539)

Description

Goat polyclonal antibody to FOXE1


Species/Host

Goat

Reactivity

Human

Conjugation

Unconjugated

Tested

ELISA, IHC

Applications

Immunohistochemical staining of Human Th...

Target

FOXE1 / TTF2

Preservatives

Supplied at 0.5 mg/ml in Tris saline, 0.02% sodium azide, pH 7.3 with 0.5% bovine serum albumin. Aliquot and store at -20°C. Minimize freezing and thawing.

Storage

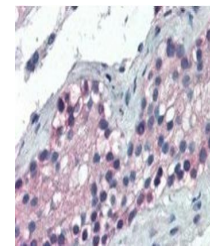
Aliquot and store at -20°C. Minimize freezing and thawing.

Note

For research use only

Application notes

ELISA: Peptide ELISA: antibody detection limit dilution 1:32000.IHC: In paraffin embedded Human Testis shows strong nuclear staining in developing sperm cells. Recommended concentration, 2-3ug/ml.This product has also been successfully used in Human Thyroid Gland: Zhang et al, Pathol Int. 2006 May;56(5):240-5.PMID: 166WB: Preliminary experiments gave an approx 70kDa band in Human Thymus and Thyroid Gland lysates after 0.3 µg/ml antibody staining. Please note that currently we cannot find an explanation in the literature for the band we observe given the calculated size of 38.1kDa according to NP_004464.2. The 65kDa band was successfully blocked by incubation with the immunizing peptide. We would appreciate any feedback from people in the field - have any results been reported with other antibodies/lysates Have any further splice variants/modified forms been reported



Immunohistochemical staining of Human Te...

Protein Sequence

AYPGGIDRFVSAM

Clonality

Polyclonal

MW

38.1

Entrez
[2304](#)
Dilution Range

ELISA: 1:8000, WB: 0.3 µg/ml, IHC-P: 5 µg/ml

Expiration Date

12 months from date of receipt.