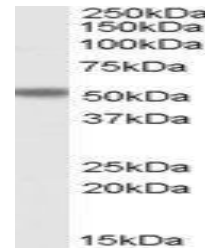


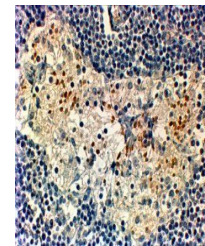
## Product Datasheet

### FOXC2 antibody (orb18538)

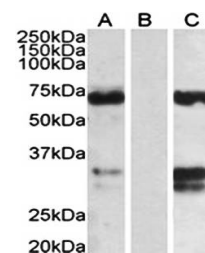
<b>Description</b>	Goat polyclonal antibody to FOXC2
<b>Species/Host</b>	Goat
<b>Reactivity</b>	Bovine, Canine, Human, Rat
<b>Conjugation</b>	Unconjugated
<b>Tested Applications</b>	ELISA, FC, WB
<b>Target</b>	FOXC2
<b>Preservatives</b>	Supplied at 0.5 mg/ml in Tris saline, 0.02% sodium azide, pH 7.3 with 0.5% bovine serum albumin. Aliquot and store at -20°C. Minimize freezing and thawing.
<b>Storage</b>	Aliquot and store at -20°C. Minimize freezing and thawing.
<b>Note</b>	For research use only
<b>Application notes</b>	ELISA: Peptide ELISA: antibody detection limit dilution 1:8000.WB: Approx 50-55kDa band observed in Human Breast Cancer lysates (calculated MW of 53.7kDa according to NP_005242.1). Recommended concentration: 1-3 µg/ml.
<b>Protein Sequence</b>	RHAAPYSYDCTKY
<b>Clonality</b>	Polyclonal
<b>MW</b>	53.7
<b>Entrez</b>	<b>2303</b>
<b>Dilution Range</b>	ELISA: 1:4000, WB: 2 µg/ml, IHC-P: 10ug/ml
<b>Expiration Date</b>	12 months from date of receipt.



Western blot analysis of Human Breast Ca...



Immunohistochemical staining of Human Br...



Western blot analysis of HEK293 lysate (...)