

---

## Product Datasheet

### CD166/ALCAM Antibody (orb18529)

**Description**

CD166/ALCAM Antibody

**Species/Host**

Rabbit

**Reactivity**

Human, Mouse, Rat

**Conjugation**

Unconjugated

**Tested Applications**

FC, IF, IHC, WB

**Immunogen**

E.coli-derived human CD166/ALCAM recombinant protein (Position: N167-E406). Human CD166/ALCAM shares 90.8% amino acid (aa) sequence identity with both mouse and rat CD166/ALCAM.

**Form/Appearance**

Lyophilized

**Concentration**

Adding 0.2 ml of distilled water will yield a concentration of 500 µg/ml.

**Storage**

Store at -20°C for one year from date of receipt. After reconstitution, at 4°C for one month. It can also be aliquotted and stored frozen at -20°C for six months. Avoid repeated freeze-thaw cycles.

**Note**

For research use only

**Application notes**

Tested Species: In-house tested species with positive results. By Heat: Boiling the paraffin sections in 10mM citrate buffer, pH6.0, for 20mins is required for the staining of formalin/paraffin sections. Other applications have not been tested. Optimal dilutions should be determined by end users. . Add 0.2ml of distilled water will yield a concentration of 500ug/ml.

**Isotype**

Rabbit IgG

**Clonality**

Polyclonal

**MW**

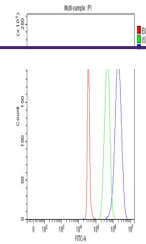
65102 MW

**Uniprot ID**
[Q13740](https://www.uniprot.org/entry/Q13740)
**Dilution Range**

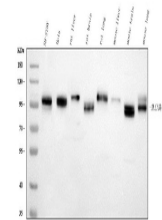
Immunohistochemistry (Paraffin-embedded Section), 0.5-1µg/ml, Human, Mouse, Rat, By Heat Western blot, 0.1-0.5µg/ml, Human, Mouse, Rat

**Expiration Date**

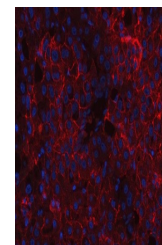
12 months from date of receipt.



Flow Cytometry analysis of SH-SY5Y cells...



WB analysis of CD166/ALCAM using anti-CD...



IF analysis of CD166/ALCAM using anti-CD...