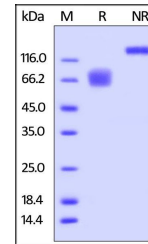


## Product Datasheet

### Human CD58 / LFA-3 Protein (orb18516)

<b>Description</b>	Human CD58, Fc Tag is expressed from human 293 cells (HEK293). It contains AA Phe 29 - Arg 215 (Acce...
<b>Reactivity</b>	Human
<b>Endotoxins</b>	1.0 EU per µg
<b>Conjugation</b>	Unconjugated
<b>Target</b>	CD58
<b>Preservatives</b>	Tris with Glycine, Arginine and NaCl, pH7.5
<b>Form/Appearance</b>	Powder
<b>Storage</b>	-20°C
<b>Tag</b>	C-Fc
<b>Note</b>	For research use only
<b>Application notes</b>	This protein carries a human IgG1 Fc tag at the C-terminus. The protein has a calculated MW of 48.1 kDa. The protein migrates as 60-70 kDa under reducing (R) condition, and 150 kDa when calibrated against Star Ribbon Pre-stained Protein Marker under non-reducing (NR) condition (SDS-PAGE) due to different glycosylation.
<b>Protein Sequence</b>	AAH05930
<b>Purity</b>	95%
<b>Source</b>	Human CD58, Fc Tag (orb18516) is expressed from human 293 cells (HEK293). It contains AA Phe 29 - Arg 215 (Accession # AAH05930).
<b>MW</b>	48.1 kDa
<b>Uniprot ID</b>	<a href="#">Q9BRW0</a>
<b>NCBI</b>	<a href="#">AAH05930</a>
<b>Expiration Date</b>	6 months from date of receipt.



SDS-PAGE analysis of Human CD58 protein