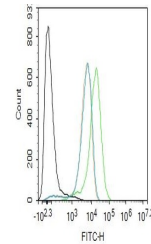


Product Datasheet

LXR alpha + LXR beta antibody (orb185093)

Description	LXR alpha + LXR beta antibody
Species/Host	Rabbit
Reactivity	Human, Mouse
Conjugation	Unconjugated
Tested Applications	FC, WB
Immunogen	KLH conjugated synthetic peptide derived from human LXR alpha (51-150/447 aa)
Target	LXR alpha + LXR beta
Preservatives	0.01M TBS(pH7.4) with 1% rAlbumin, 0.03% Proclin300 and 50% Glycerol.
Form/Appearance	Liquid
Concentration	1mg/ml
Storage	Maintain refrigerated at 2-8°C for up to 2 weeks. For long term storage store at -20°C in small aliquots to prevent freeze-thaw cycles.
Note	For research use only
Isotype	IgG
Clonality	Polyclonal
MW	51 kDa
Uniprot ID	Q13133
Dilution Range	WB=1:500-2000, Flow-Cyt=2ug/Test, IHC-F=1:100-500, ICC=1:100-500, IF=1:100-500, ELISA=1:5000-10000
Expiration Date	12 months from date of receipt.



Flow cytometry of THP-1. Primary Antibody...